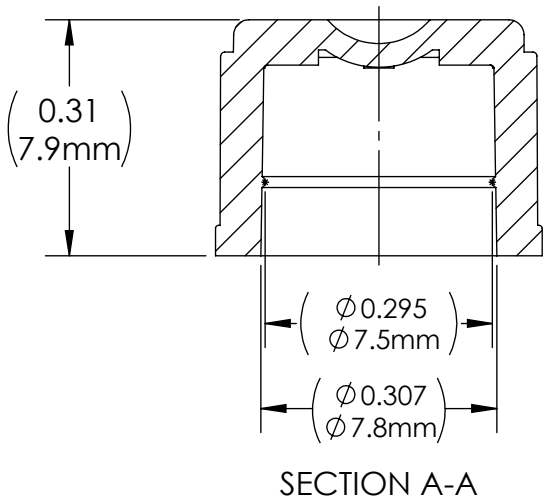
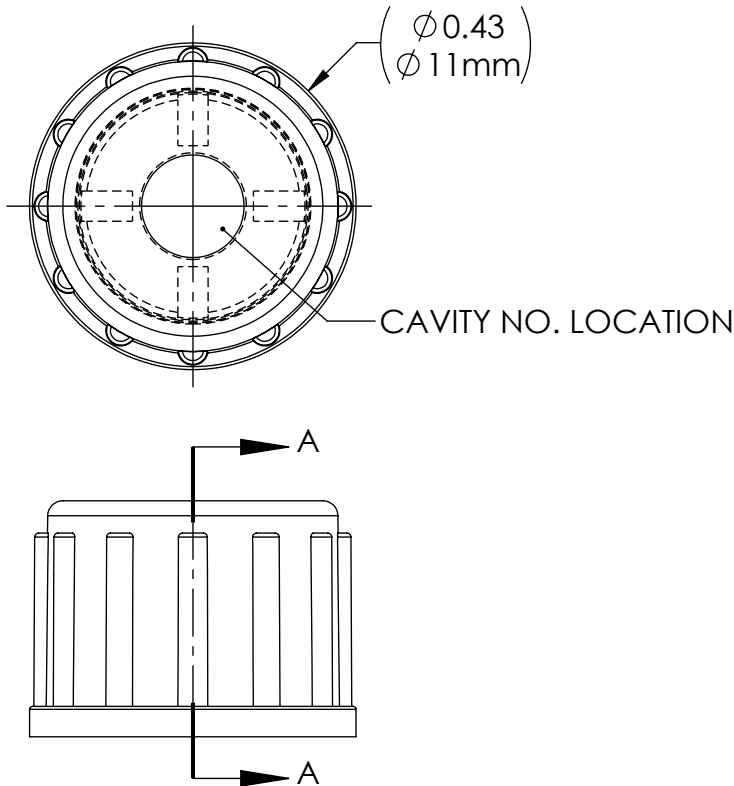


DRAWING NO. C2451222XX	REV C	Customer Drawing	REVISION HISTORY			
			REV	DESCRIPTION (ECO)	DATE	APPROVED
			B	UPDATE DRW VIEWS, NO DIMENSIONAL CHANGES ECO 11418	12/08/21	AK
			C	UPDATE MATERIAL TO READ HP373P ECO 12734	06/26/24	DK



- NOTES:
- SUFFIX INDICATES MATERIAL & COLOR:
45 - CLEAR POLYPROPYLENE PURELL HP373P OR EQUIVALENT.
 - CRITICAL DIMENSIONS ARE CIRCLED AND SUBJECT TO INSPECTION.
 - DIMENSIONS IN PARENTHESES ARE FOR REFERENCE ONLY.
 - ALL DIMENSIONS ARE IN INCHES, WITH NOMINAL DIMENSIONS IN METRIC BELOW.

MOLDED PARTS: GATES, PARTING LINES, AND FLASH PER QUALITY CRITERIA PROPRIETARY AND CONFIDENTIAL THE INFORMATION CONTAINED IN THIS DRAWING IS SOLE PROPERTY OF HALKEY-ROBERTS CORPORATION ST. PETERSBURG, FL. ANY REPRODUCTION IN PART OR AS A WHOLE WITHOUT THE WRITTEN PERMISSION OF HALKEY-ROBERTS CORPORATION IS PROHIBITED.	DRAWN BY DMC DATE 6/15/12	APPROVED BY DK DATE 06/26/24	HR® Halkey-Roberts®	
	MATERIAL SEE NOTE FINISH N/A	THIRD ANGLE PROJECTION 	TITLE SNAP-ON CAP DRAWING NO. C2451222XX SCALE 4:1	REV C SHEET 1 OF 1
	UNLESS OTHERWISE SPECIFIED: DIMENSIONS ARE IN INCHES TOLERANCES: ANGULAR: $\pm 1^\circ$ TWO PLACE DECIMAL $\pm .01$ THREE PLACE DECIMAL $\pm .005$	DO NOT SCALE DRAWING		